

Used Kia Carnival Used Motor Vehicle NSCC Intelligent Cruise Control

Our Product Introduction

for more products please visit us on electriccars-ev.com

Basic Information

- Place of Origin: China
- Brand Name: Kia
- Certification: VDA, TUV, ISO
- Model Number: Carnival
- Minimum Order Quantity: 1
- Price: \$46000-\$49000
- Packaging Details: Sea, Tailer, Containers, RO-RO ship
- Delivery Time: 7 working days
- Payment Terms: L/C, D/A, D/P, T/T, Western Union, MoneyGram
- Supply Ability: 1-10 units 15 - 20 working days, 10-30 units 20-30 working days, 30-50 units ≥30 working days

R·CHENG

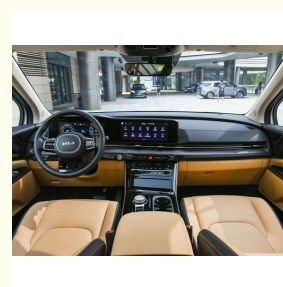
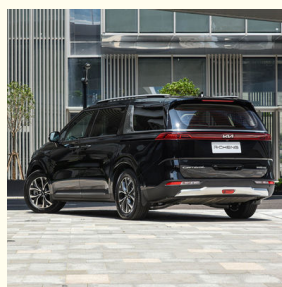
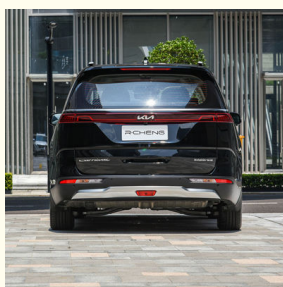
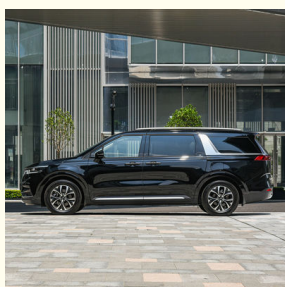


Product Specification

- Brand Name: Kia
- Steering: Left
- Engine Type: Turbo
- Tire Size: 235/60 R18
- Driving Mode: Front-engine Front-wheel Drive
- General Oil Consumption (NEDC): 7.8
- Max. Torque: 353 N·m
- Gearbox Type: AT
- Seat Material: Imitation Leather
- Size Of The Center Console: 12.3 Inch
- Highlight: used kia carnival Used Motor Vehicle, NSCC intelligent cruise control kia carnival second hand
used kia carnival NSCC Intelligent Cruise



More Images

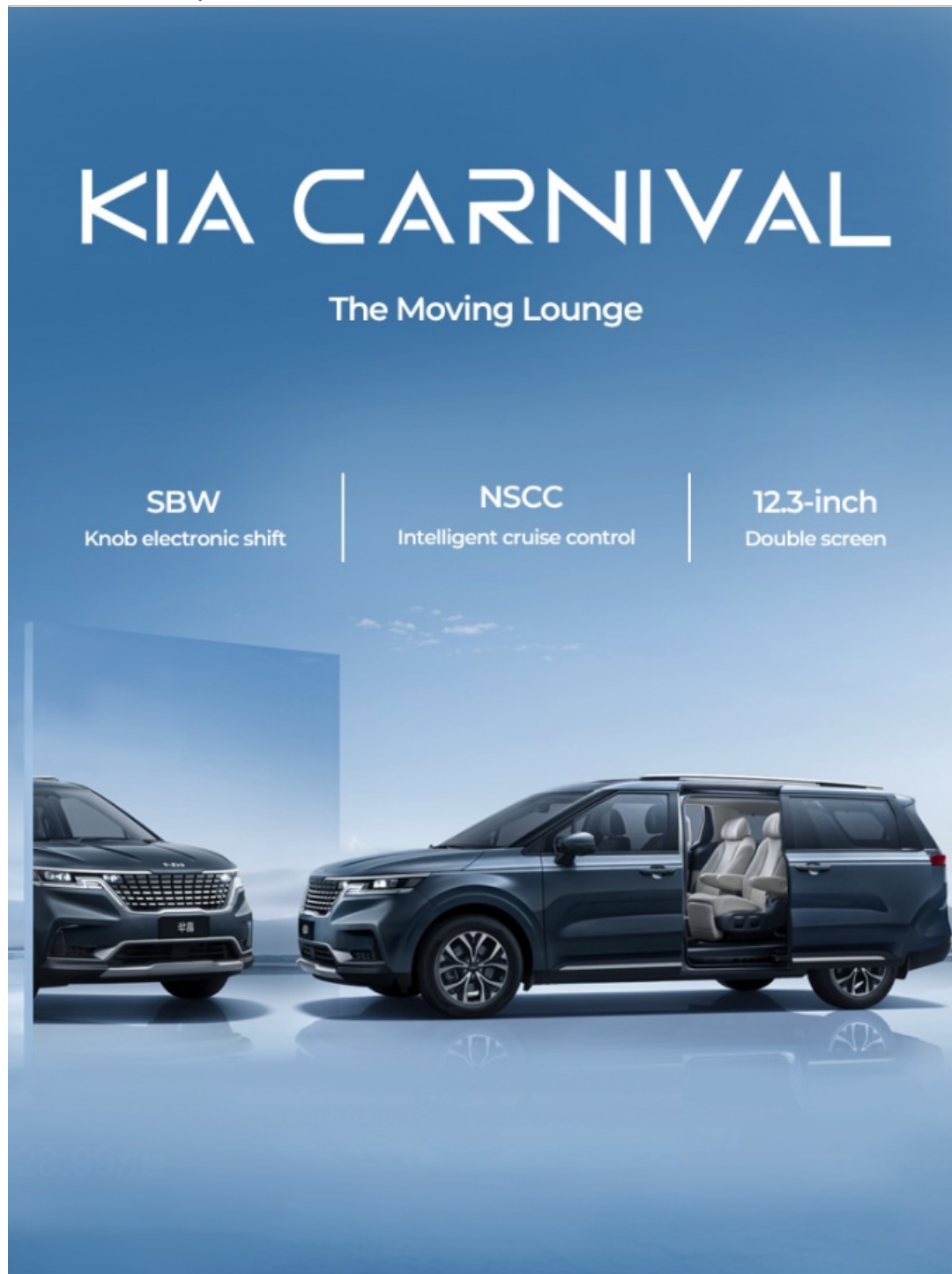


Product Description

2023 Hot Sell Low Price Kia Carnival Used Petrol Cars In Stock Adult Cars For Sale Second Hand Cars

KIA CARNIVAL

Product Description



The moving lounge

SBW -- knob electronic shift
NSCC -- intelligent cruise shift
12.3 inch -- two screens



▲ Full power and comfortable ride

New body platform and abundant power output, galloping more leisurely

Full power and comfortable ride

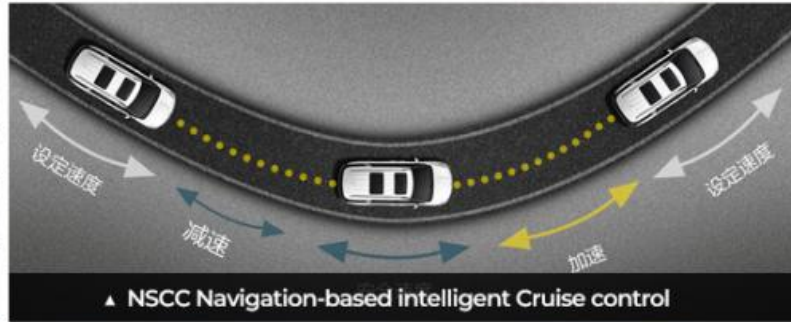
New body platform

Abundant power output



Amazing exterior design

Wide intake grille
A pillar & suspension roof
Integrated LED taillights



Intelligent and comfortable interior design

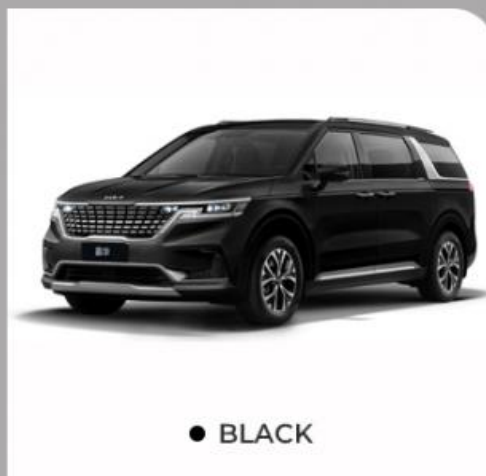
Electric sliding door
Electric panoramic sunroof
Electric tailgate
Electronic shift
NSCC navigation-based intelligent cruise control
KRELL premium sound system (12 speakers)
Intelligent network connection
Premium leather seats with ventilation and heating function
Sun shade curtain(2 rows /3 rows)

Product Configurations

Kia Carnival		
Basic Specification	Max. Speed (km/h)	205
	Length*Width*Height (mm)	5155x1995x1795
	Body Structure	7 Seats, 5 Doors
	Tire Specification	235/60 R18
Power System	Driving Mode	Front-engine Front-wheel Drive
	Engine Brand	G4NN
	Fuel Type	Gasoline
	General Oil Consumption (NEDC)	7.8
	Tank Capacity (L)	72
	Displacement (L)	2.0
	Valve Mechanism	DOHC
	Air Intake Type	Turbocharger
	Max. Horsepower (ps)	233
	Max. Torque (N·m)	353
Chassis System	Gearbox Type	AT
	Number Of Gears	8
Convenience	Seat Material	Leather
	Driving Assistance Video	360° Image
	Size Of The Center Console	12.3 Inch

Color Show

HOT SELLING COLORS SHOW



RUICHENG Chengdu Ruicheng Automobile Service Co., Ltd.

☎ 19158810053

✉ mango@ruichengauto.com

🔌 electriccars-ev.com

Hall 5, No. 1, Yinhe Road, Damian Street Chengdu City, Sichuan Province, China